

ABOUT COMPANY

We are International EMC, with the rich history of collaboration with our loyal clients' partners around the world. As the noble and most well-known supplier by having overseas offices ready to supply you with Bitumen Emulsion - Cutback Bitumen - Emulsifier - Antistripping

International EMC committed to bringing you the best available products along with the highest standards of Quality. We always strive to build long lasting business partnerships with our clients by offering the best value proposition for the trade. we offer precisely made products by the experienced professionals, who possess an immense knowledge and experience in their respective fields.

In bitumen case, we are active about supplying all kind of bitumen emulsion since 2009 and have succeed to export variety of emulsion to Iraq, Tanzania, Armenia and Turkmenistan.

Also, International EMC as an exclusive representative of local emulsifiers and antistripping additive produced by elites of RRG Co. honors to serving road and construction community. During the years, over 700 tons of mentioned products exported to other countries.

In order to provide better and wider service to our esteemed customers we added a new production unit by modern machinery and experienced and expert staff in order to produce cutback (MC) and emulsion bitumen.

Also, QC Laboratory of RRG Co. has been established to study the quality of the products and to perform all the tests for cutback bitumen and bitumen emulsion according to the existing standards.



OUR ACTIVITIES

01

- Raw materials Supplying:

Variety of CATIONIC and ANIONIC emulsifiers:

particular for Tack coat, Seal coat, Prime coat, Micro surfacing, Chip seal and etc.

Variety of additives:

Anti Stripping, Latex, Polymer and etc.

02

- Production of types of Cationic and Anionic Emulsions Special for Tack coat, Seal coat, Prime coat, Micro surfacing, Chip seal and etc according to customer order

03

- production of types of building emulsions (Emul Ban)

04

- production of types of Cutback bitumen

05

- Distribution network throughout the country

06

- Executive and technical consulting services in the groundwork of Bitumen emulsion, Cutback bitumen and asphalt, bitumen additives

07

- Production, Assembling, setup emulsion tanks pursuant to global standards Producing and assembling all kinds of dosing pump

PRODUCING AND SUPPLYING ALL KIND OF
BITUMEN EMULSION

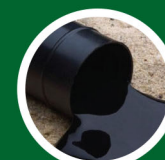


PRODUCTS PRESENTATION

BITUMEN VARIETY

عرض المنتجات

أنواع البيتومين



Cationic Bitumen Emulsion

البيتومين المستحلب موجب الشحنة

(Bitumen Emulsion) البيتومين المستحلب

سريعة الكسر Quick Setting (QS)		شديدة المقاومة للكسر Slow Setting (SS)		متوسطة المقاومة للكسر Medium Setting (MS)		قليلة المقاومة للكسر Rapid Setting (RS)	
CQS-1h		CSS-1h	CSS-1	CMS-2h	CMS-2	CRS-2	CRS-1



Cutback Bitumen

البيتومين القابل للذوبان

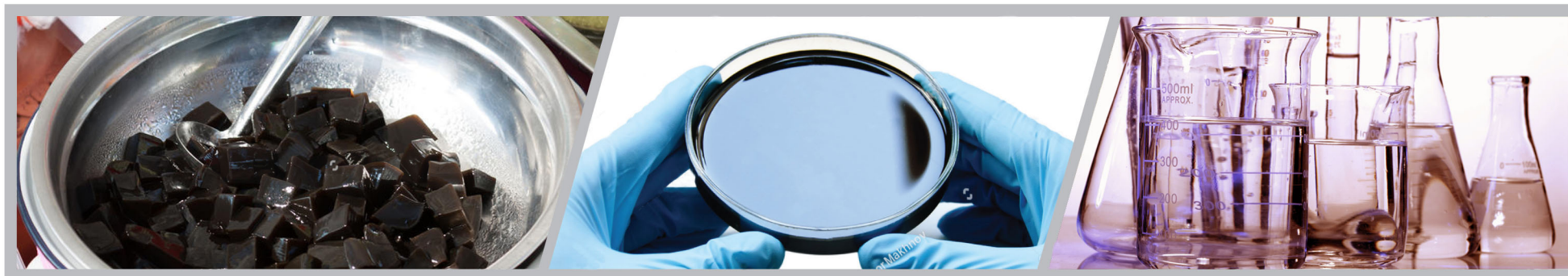
(Cutback Bitumen) البيتومين القابل للذوبان

سريع المعالجة Rapid Curing (RC)	متوسط سرعة المعالجة Medium Curing (MC)	بطيء المعالجة Slow Curing (SC)
RC-70	MC-30	SC-70
RC-250	MC-70	SC-250
RC-800	MC-250	SC-800
RC-3000	MC-800	SC-3000
	MC-3000	



BITUMEN ADDITIVES

المواد المضافة للبيتومين



المقاومة للتعري (Antistripping)

الخواص Properties		التصنيف Classification		الاسم Name
الاستخدامات use	الجرعة Dosage	الطبيعة الكيميائية Chemical Nature	الشكل الفيزيائي Physical Form	
يزيد من التصاق البيتومين المُغطى بالمواد، ويزيد أيضاً من المقاومة للتمدد ومقاومة مارشال والمقاومة ضد الرطوبة وتشكل الأخاديد. Increases adhesion and wettability between aggregate and bitumen, also enhances tensile strength, marshal resistance and resistance against moisture and rutting.	0.2- 0.5 %	الدهن عديد الأمين Fatty Polyamines	سائل Liquid	WetMul-900
يزيد من التصاق البيتومين المُغطى بالمواد، ويزيد أيضاً من المقاومة للتمدد ومقاومة مارشال والمقاومة ضد الرطوبة وتشكل الأخاديد. Increases adhesion and wettability between aggregate and bitumen, also enhances tensile strength, marshal resistance and resistance against moisture and rutting.	0.3- 0.5 %	الدهن عديد الأمين Fatty Polyamines	سائل Liquid	WetMul-950



المستحلبات (Emulsifiers)

التطبيقات Applications				التصنيف Classification		الخواص Properties	الاسم Name	
QS	SS	MS	RS	الجرعة Dosage	موجب الشحنة Cationic	سالب الشحنة Anionic	الشكل الفيزيائي Physical Form	
		●	●	% 0.6-0.15	●		سائل Liquid	Neftamin-114
	●			% 1.2-0.8	●		سائل Liquid	Neftamin-2200
●				% 0.8-0.5	●		سائل Liquid	Neftamin-6345
●				% 0.8-0.5	●		سائل Liquid	Neftamin-6655
		●	●	% 0.6-0.15	●		سائل Liquid	PA-5
	●			% 1.2-0.8	●		سائل Liquid	PA-11
	●	●	●	% 2-0.5		●	سائل Liquid	NX-5800
	●	●	●	% 2-0.5		●	سائل Liquid	NX-6250

طريقنا هو الأقرب



OUR PATH IS THE CLOSEST



محسن التصاق (Adhesion Improver)

الاسم Name	التصنيف Classification	الخواص Properties
الشكل الفيزيائي Physical Form	الطبيعة الكيميائية Chemical Nature	الجرعة Dosage
سائل Liquid	●	0.3- 0.7 %
Chasbamin		يزيد من الالتصاق والنفوذ، كما يزيد العمر الافتراضي للمستحلب في الظروف الحرارية المختلفة للتصميم والإنتاج. Increases the adhesion, permeability and emulsion durability under various temperature conditions of design and production.



مزيغ الأسفلت البارد (CMA (Cold Mix Asphalt)

الاسم Name	التصنيف Classification	الخواص Properties
الشكل الفيزيائي Physical Form	الطبيعة الكيميائية Chemical Nature	الجرعة Dosage
سائل Liquid	●	0.1- 0.15 %
CMA-20		إنتاج مزيغ الإسفلت البارد وتثبيت جودة وطبيعة الإسفلت حتى وقت التنفيذ. Production of cold mix asphalt and maintenance of the quality and nature of the asphalt until its operation time.